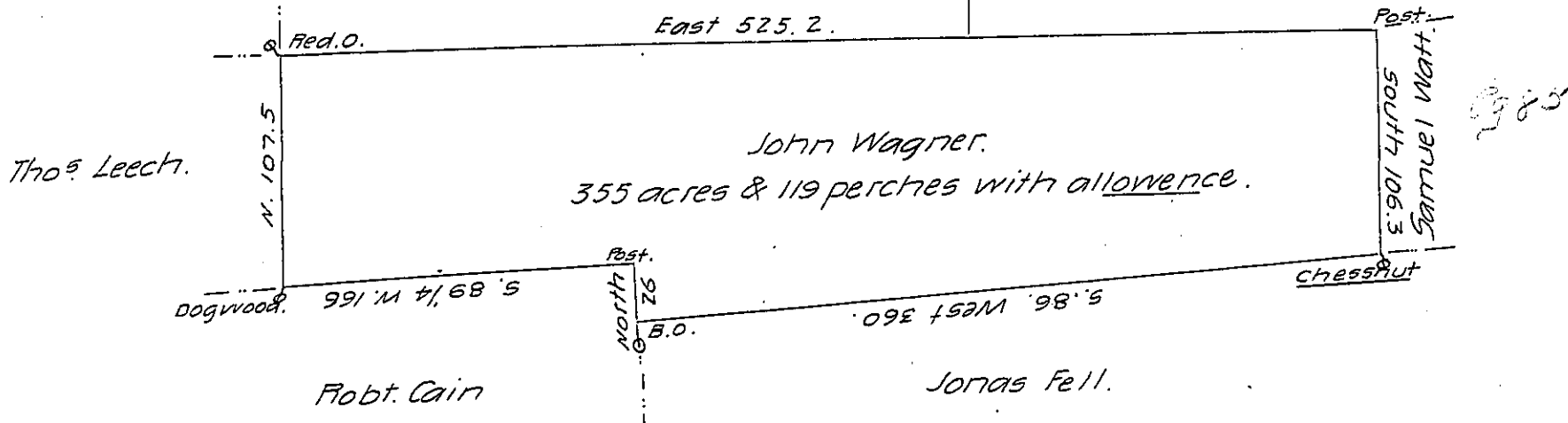


Pg 209

Line of Crawford County.

Land Warranted to Phillip Wager.

Settled by George McMannis



Situate in Salem Township Mercer County adjoining the Line divide-  
 ing Crawford from Mercer Counties Containing three hundred & fifty five  
 acres & one hundred and nineteen perches with allowance of Six per cent  
 for roads &c. Surveyed December 17th 1834 in pursuence of a Warrant  
 granted to John Wagner and to me directed and dated April the 14th  
 A.D. 1792. by me

John Findley D.S.

To Jacob Spangler Esqr.

Surveyor General.

IN TESTIMONY that the above is a copy of the original remaining on file in  
 the Department of Internal Affairs of Pennsylvania, made  
 conformably to an Act of Assembly approved the 16th day of  
 February, 1833, I have hereunto set my Hand and caused  
 the Seal of said Department to be affixed at Harrisburg,  
 this fourth day of June 1907

*Henry Howell*  
 Secretary of Internal Affairs.